



HEATHER  
HOMES

# HEATHER Felicity

KURAVANKONAM, THIRUVANANTHAPURAM  
2,3 AND 4 BHK APARTMENTS



[www.heatherhomes.in](http://www.heatherhomes.in)

RERA Registration No.:K-RERA/PRJ/TVM/121/2023

RERA Website: [rera.kerala.gov.in](http://rera.kerala.gov.in)

# WHERE HAPPINESS IS A WAY OF LIFE

What is the recipe for happiness? A dream home full of luxury and comfort? A vibrant community of like-minded families nestled in a beautiful campus? A luxurious lifestyle set in a prime location? It is all this and more that we have designed for you at Heather Felicity. Step into a delightful world where exquisite 2,3 & 4 apartments await to pamper you with unmatched comfort and convenience.



Artist's impression of the Lobby

# WHERE GRAND ARRIVALS ARE ROUTINE

Home is always where your heart is and so homecomings deserve to be both memorable and grand. The classy reception lobby at Heather Felicity will ensure that your arrivals are pleasant and impressive.



## WHERE LEISURE IS JUST A STEP AWAY

Premium leisure amenities have been thoughtfully picked to offer you a lifetime to recreation. Kickstart your health journey at our gym or throw a glamorous party or indulge in some serenity, choose from our array of in-house amenities.

## AMENITIES

At Heather Felicity we have gone that extra mile to bring a smile to your face. We have added value through thoughtful features and services to ensure a hassle-free and blissful life for you and your family. Careful details have been embedded into your homes and common areas to foster happiness.

- DTH/CABLE TV PROVISION
- PROXIMITY ACCESS
- SURVEILLANCE SYSTEM
- BOOM BARRIER
- INCINERATOR
- BIO BIN
- POWER BACK UP

- SOLAR SYSTEM TO POWER COMMON AMENITIES
- RETICULATED GAS WITH GAS LEAKAGE DETECTOR AT GAS BANK.
- CHARGING POINTS FOR ELECTRIC VEHICLE
- MOTION SENSOR LIGHT IN PARKING AREA & COMMON LOBBY

- INTERCOM FACILITY FROM SECURITY CABIN TO APARTMENTS
- PROFILED RUBBER COLUMN CORNER GUARDS WITH REFLECTIVE SYSTEM IN PARKING AREAS.
- RAINWATER HARVESTING WITH OVERFLOW.
- GUEST SUITE

## LEISURE AMENITIES



OPULENT ENTRANCE LOBBIES & LOUNGE



MULTIPURPOSE HALL / ASSOCIATION ROOM



OPEN DECK PARTY AREA AT TERRACE LEVEL

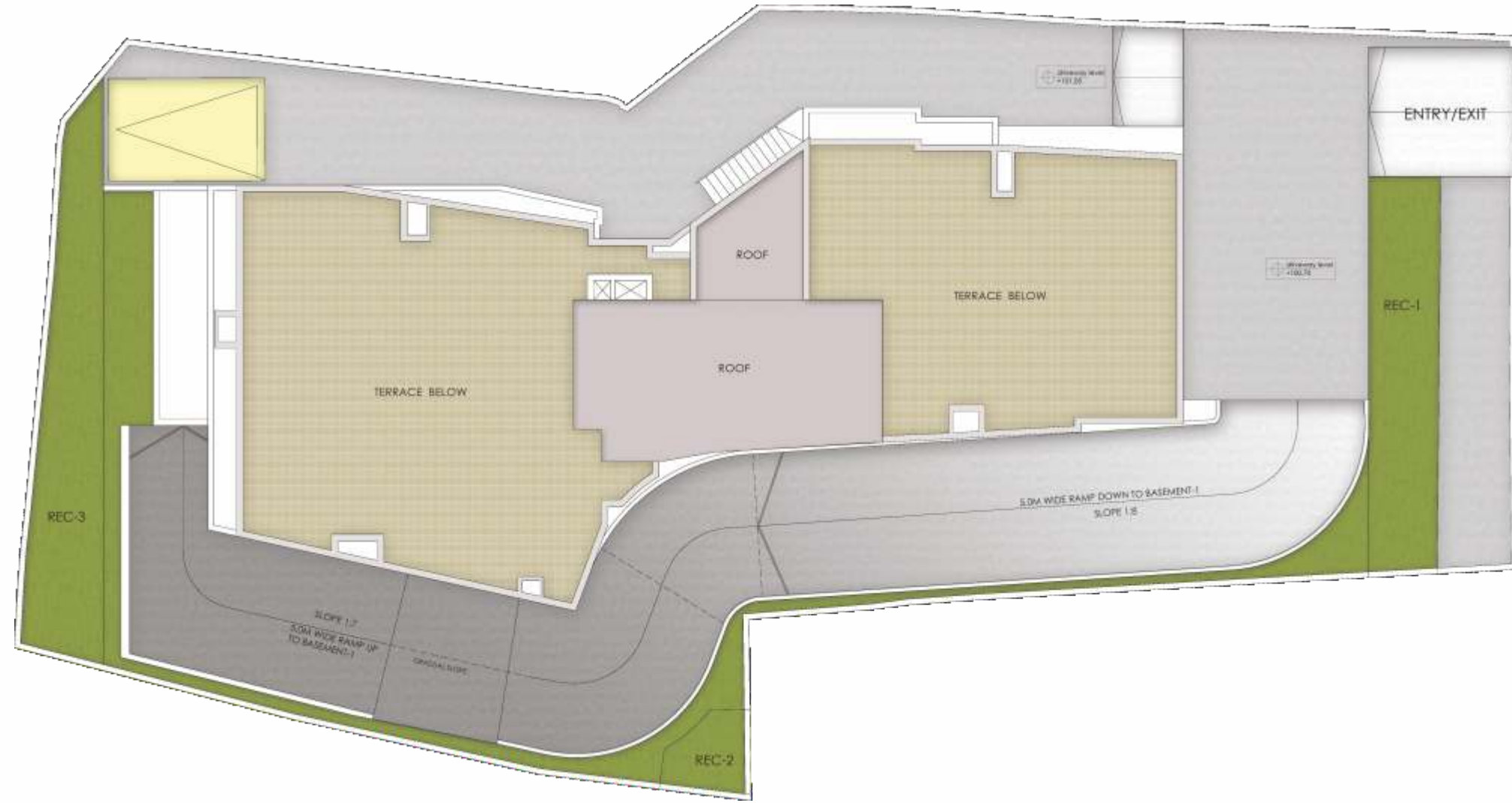


CHILDREN PLAY AREA



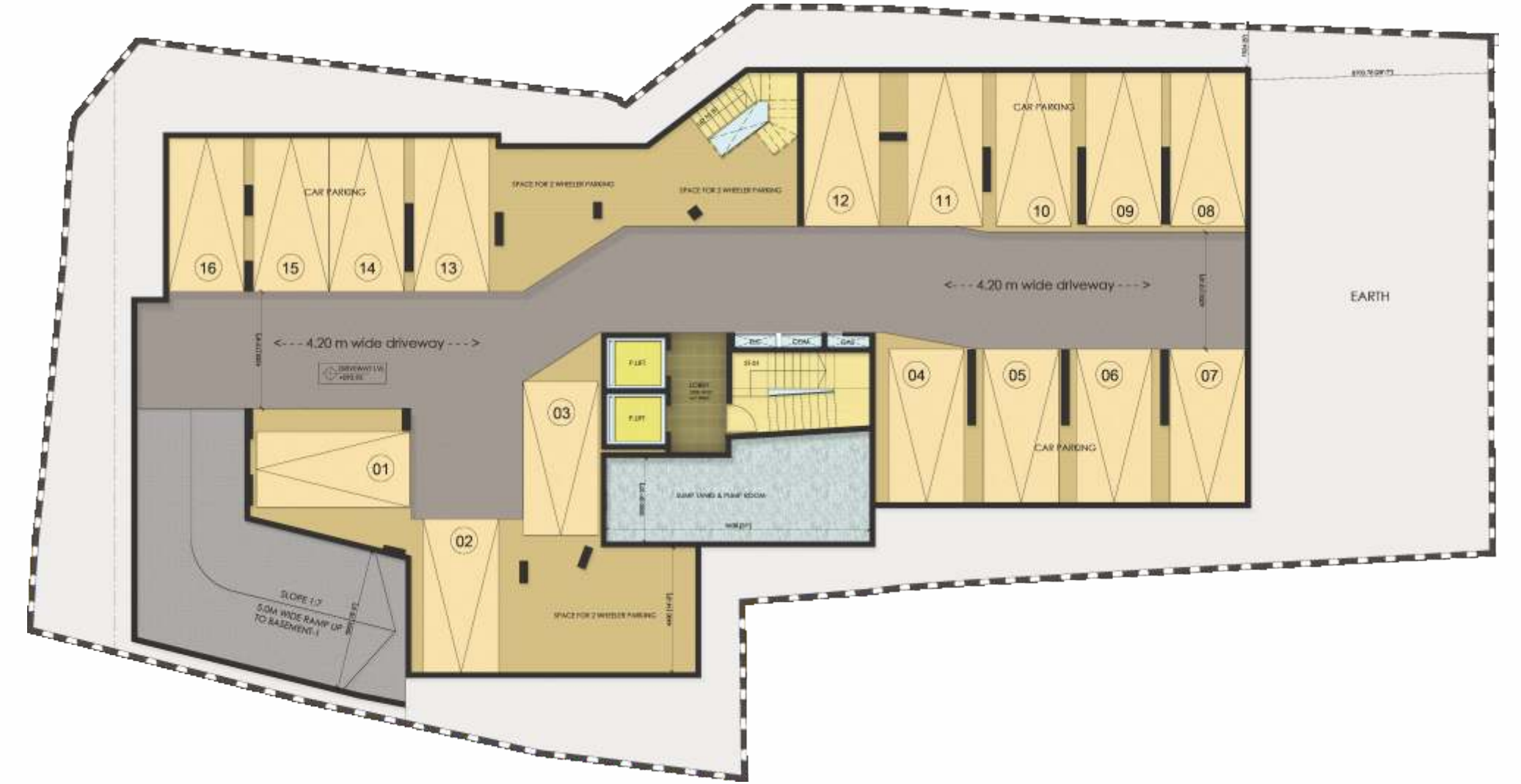
FULLY EQUIPPED AIR CONDITIONED UNISEX GYM

# SITE PLAN



All dimensions may vary slightly during construction. Furniture layout are indicative only.

# BASEMENT -2 FLOOR PLAN



All dimensions may vary slightly during construction. Furniture layout are indicative only.



# BASEMENT - 1 FLOOR PLAN



All dimensions may vary slightly during construction. Furniture layout are indicative only.

# GROUND FLOOR PLAN



All dimensions may vary slightly during construction. Furniture layout are indicative only.



# 1ST FLOOR PLAN



All dimensions may vary slightly during construction. Furniture layout are indicative only.

# 2ND & 3RD FLOOR PLAN



All dimensions may vary slightly during construction. Furniture layout are indicative only.

# 4TH FLOOR PLAN



All dimensions may vary slightly during construction. Furniture layout are indicative only.

# 5TH FLOOR PLAN



All dimensions may vary slightly during construction. Furniture layout are indicative only.

# 6TH TO 9TH FLOOR PLAN



UNIT - 6B, 7B, 8B, 9B  
2BHK-2T  
SA : 1207.85 Sq.ft.

UNIT - 6A, 7A, 8A, 9A  
2BHK-2T  
SA : 1157.90 Sq.ft.

UNIT - 6C, 7C, 8C, 9C  
3BHK-3T  
SA : 1709.75 Sq.ft.



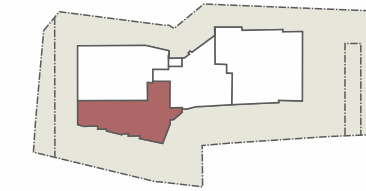
All dimensions may vary slightly during construction. Furniture layout are indicative only.

## UNIT- GA | 2BHK

### GROUND FLOOR

SALEABLE AREA - 110.88 Sq.m (1193.54 Sq.ft)  
RERA CARPET AREA - 67.20 Sq.m (723.33 Sq.ft)  
BALCONY AREA - 6.93 Sq.m (74.59 Sq.ft)

### KEY PLAN

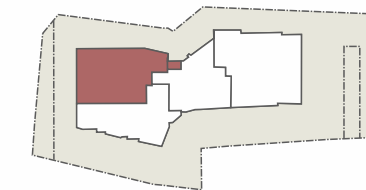


## UNIT- GB | 2BHK

### GROUND FLOOR

SALEABLE AREA - 136.03 Sq.m (1464.19 Sq.ft)  
RERA CARPET AREA - 79.91 Sq.m (860.14 Sq.ft)  
BALCONY AREA - 10.36 Sq.m (111.51 Sq.ft)

### KEY PLAN



All dimensions may vary slightly during construction. Furniture layout are indicative only.



NO.	NAME	SIZE IN FT	SIZE IN MM
1	LIVING	10'-6"X8'-11"	3200X2720
2	DINING	14'-1"X8'-10"	4280X2700
3	KITCHEN	8'-3"X8'-3"	2500X2500
4	UTILITY	5'-2"X3'-7"	1565X1095
5	BALCONY-1	5'-11"X5'-3"	1800X1600
6	HALLWAY-1	8'-0"X4'-0"	2460X1200
7	HALLWAY-2	7'-7"X4'-0"	2290X1200
8	MASTER BEDROOM	10'-6"X 12'-0"	3200X3660
9	BATH-1	4'-5"X8'-2"	1350X2500
10	BALCONY -2	3'-3"X12'-9"	1000X3895
11	BEDROOM-2	10'-6"X 11'-3"	3200X3450
12	BATH-2	4'-6"X9'-5"	1350X2850*

(\*indicates average room size)



NO.	NAME	SIZE IN FT	SIZE IN MM
1	LIVING	11'-2"X14'-10"	3380X4520
2	DINING	10'-0"X7'-2"	3040X2180
3	KITCHEN	10'-6"X9'-7"	3200X2930*
4	UTILITY	6'-0"X4'-1"	1830X1230
5	BALCONY-1	7'-4"X4'-2"	2240X1250
6	HALLWAY	6'-7"X4'-11"	2000X1500
7	MASTER BEDROOM	13'-2"X12'-0"	4000X3650
8	LOUNGE	5'-3"X5'-4"	1600X1620
9	BATH-1	8'-0"X5'-11"	2450X1800
10	BALCONY-2	3'-3"X5'-4"	1000X1620
11	BEDROOM-2	11'-7"X13'-7"	3520X4150
12	BATH-2	5'-10"X8'-3"	1770X2500
13	BALCONY-3	3'-3"X11'-0"	1000X3350

(\*indicates average room size)

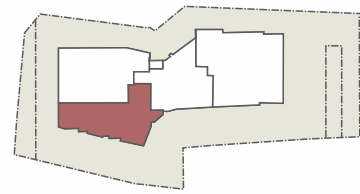


## UNIT- 1A | 2 BHK

### 1<sup>ST</sup> FLOOR

SALEABLE AREA - 110.88 Sq.m (1193.54 Sq.ft)  
RERA CARPET AREA - 67.20 Sq.m (723.33 Sq.ft)  
BALCONY AREA - 6.93 Sq.m (74.59 Sq.ft)

### KEY PLAN



NO.	NAME	SIZE IN FT	SIZE IN MM
1	LIVING	10'-6"X8'-11"	3200x2720
2	DINING	14'-1"X8'-10"	4280X2700
3	KITCHEN	8'-3"X8'-3"	2500X2500
4	UTILITY	5'-2"X3'-7"	1565X1095
5	BALCONY-1	5'-11"X5'-3"	1800X1600
6	HALLWAY-1	8'-0"X4'-0"	2460X1200
7	HALLWAY-2	7'-7"X4'-0"	2290X1200
8	MASTER BEDROOM	10'-6"X12'-0"	3200X3660
9	BATH-1	4'-5"X8'-2"	1350X2500
10	BALCONY -2	3'-3"X 12'-9"	1000X3895
11	BEDROOM-2	10'-6"X11'-3"	3200X3450
12	BATH-2	4'-6"X9'-5"	1350X2850*

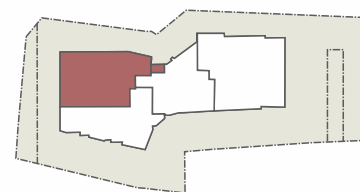
(\*indicates average room size)

## UNIT- 1B | 2BHK

### 1<sup>ST</sup> Floor

SALEABLE AREA - 136.03 Sq.m (1464.19 Sq.ft)  
RERA CARPET AREA - 79.91 Sq.m (860.14 Sq.ft)  
BALCONY AREA - 10.36 Sq.m (111.51 Sq.ft)

### KEY PLAN



NO.	NAME	SIZE IN FT	SIZE IN MM
1	LIVING	11'-2"X14'-10"	3380X4520
2	DINING	10'-0"X7'-2"	3040X2180
3	KITCHEN	10'-6"X9'-7"	3200X2930
4	UTILITY	6'-0"X4'-1"	1830X1230
5	BALCONY-1	7'-4"X4'-2"	2240X1250
6	HALLWAY	6'-7"X4'-11"	2000X1500
7	MASTER BEDROOM	13'-2"X12'-0"	4000X3650
8	LOUNGE	5'-3"X5'-4"	1600X1620
9	BATH-1	8'-0"X5'-11"	2450X1800
10	BALCONY -2	3'-3"X5'-4"	1000X1620
11	BEDROOM-2	11'-7"X13'-7"	3520X4150
12	BATH-2	5'-10"X8'-3"	1770X2500
13	BALCONY-3	3'-3"X11'0"	1000X3350

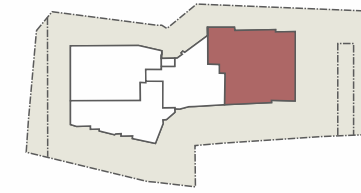
(\* indicates average room size)

## UNIT- 1C | 3BHK

### 1<sup>ST</sup> FLOOR

SALEABLE AREA - 177.03 Sq.m (1905.59 Sq.ft)  
RERA CARPET AREA - 107.83Sq.m (1160.67 Sq.ft)  
BALCONY AREA - 13.00 Sq.m (139.93 Sq.ft)

### KEY PLAN



NO.	NAME	SIZE IN FT	SIZE IN MM
1	FOYER	7'-3"X3'-10"	2210X1150
2	LIVING	8'-10"X11'-7"	2680X3520
3	DINING	10'-8"X15'-5"	3250X4700
4	KITCHEN	9'-2"X13'-2"	2770X4020
5	UTILITY	5'-4"X5'-7"	1650X1700
6	S.TOILET	4'-0"X5'-1"	1200X1550
7	BALCONY - 1	8'-9"X4'-6"	2670X1370
8	HALLWAY- 1	4'-11"X5'-11"	1500X1780
9	HALLWAY-2	5'-6"X3'-1"	1680X950
10	MASTER BEDROOM	11'-0"X 11'-6"	3350X3500
11	BATH-1	4'-9"X8'-6"	1450X2600*
12	BALCONY-2	7'-3"X3'-3"	2220x1000
13	BEDROOM-2	11'-0"X 13'-0"	3350X3940
14	BATH-2	4'-9"X8'-2"	1450X2500*
15	BEDROOM-3	12'-5"X13'-7"	3790X4150
16	DRESS	8'-6"X3'-1"	2600X950
17	BATH-3	8'-0"X4'-7"	2450X1440
18	BALCONY-3	13'-0"X3'-6"	3940X1080

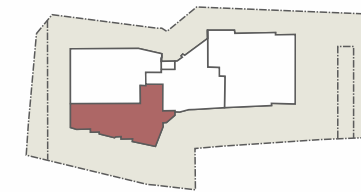
(\* indicates average room size)

## UNIT- 2A & 3A | 2BHK

### 2<sup>ND</sup> AND 3<sup>RD</sup> FLOOR

SALEABLE AREA - 110.88 Sq.m (1193.54 Sq.ft)  
RERA CARPET AREA - 67.20 Sq.m (723.33 Sq.ft)  
BALCONY AREA - 6.93 Sq.m (74.59 Sq.ft)

### KEY PLAN



NO.	NAME	SIZE IN FT	SIZE IN MM
1	LIVING	10'-6"X8'- 11"	3200x2720
2	DINING	14'-1"X8'- 10"	4280x2700
3	KITCHEN	8'-3"X8'-3"	2500X2500
4	UTILITY	5'-2"X3'-7"	1565X1095
5	BALCONY- 1	5'-11"X5'-3"	1800X1600
6	HALLWAY- 1	8'-0"X4'-0"	2460X 1200
7	HALLWAY-2	7'-7"X4'-0"	2290X 1200
8	MASTER BEDROOM	10'-6"X12'-0"	3200X3660
9	BATH - 1	4'-5"X8'-2"	1350X2500
10	BALCONY -2	3'-3"X12'-9"	1000X3895
11	BEDROOM-2	10'-6"X11'-3"	3200X3450
12	BATH-2	4'-6"X9'-5"	1350X2850'

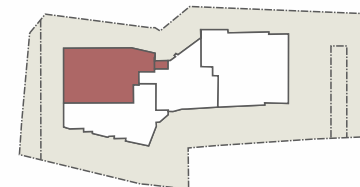
(\*indicates average room size)

## UNIT- 2B & 3B | 2 BHK

### 2<sup>nd</sup> AND 3<sup>rd</sup> Floor

SALEABLE AREA - 136.03 Sq.m (1464.19 Sq.ft)  
 RERA CARPET AREA - 79.91 Sq.m (860.14 Sq.ft)  
 BALCONY AREA - 10.36 Sq.m (111.51 Sq.ft)

### KEY PLAN



NO.	NAME	SIZE IN FT	SIZE IN MM
1	LIVING	11'-2"X14'-10"	3380X4520"
2	DINING	10'-0"X7'-2"	3040X2180
3	KITCHEN	10'-6"X9'-7"	3200X2930*
4	UTILITY	6'-0"X4'-1"	1830X1230
5	BALCONY-1	7'-4"X4'-2"	2240X1250
6	HALLWAY	6'-7"X4'-11"	2000X1500
7	MASTER BEDROOM	13'-2"X12'-0"	4000X3650
8	LOUNGE	5'-3"X5'-4"	1600X1620
9	BATH-1	8'-0"X5'-11"	2450X1800
10	BALCONY-2	3'-3"X5'-4"	1000X1620
11	BEDROOM-2	11'-7"X13'-7"	3520X4150
12	BATH-2	5'-10"X8'-3"	1770X2500
13	BALCONY-3	3'-3"X11'-0"	1000X3350

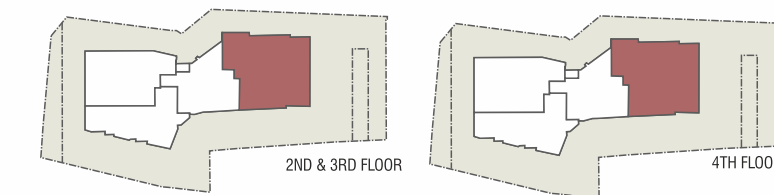
(\*indicates average room size)

## UNIT- 2C, 3C & 4C | 3BHK

### 2<sup>nd</sup> TO 4<sup>th</sup> Floor

SALEABLE AREA - 177.03 Sq.m (1905.59 Sq.ft)  
 RERA CARPET AREA - 107.83 Sq.m (1160.67 Sq.ft)  
 BALCONY AREA - 13.00 Sq.m (139.93 Sq.ft)

### KEY PLAN



NO.	NAME	SIZE IN FT	SIZE IN MM
1	FOYER	7'-3"X3'-10"	2210X1150
2	LIVING	8'-10"X11'-7"	2680X3520
3	DINING	10'-8"X15'-5"	3250X4700
4	KITCHEN	9'-2"X13'-2"	2770X4020
5	UTILITY	5'-4"X5'-7"	1650X1700
6	S.TOILET	4'-0"X5'-1"	1200X1550
7	BALCONY -1	8'-9"X4'-6"	2670X1370
8	HALLWAY-1	4'-11"X5'-11"	1500X1780
9	HALLWAY-2	5'-6"X3'-1"	1680X950
10	MASTER BEDROOM	11'-0"X11'-6"	3350X3500
11	BATH-1	4'-9"X8'-6"	1450X2600*
12	BALCONY-2	7'-3"X3'-3"	2220X1000*
13	BEDROOM-2	11'-0"X13'-0"	3350X3940
14	BATH-2	4'-9"X8'-2"	1450X2500*
15	BEDROOM-3	12'-5"X13'-7"	3790X4150
16	DRESS	8'-6"X3'-1"	2600X950
17	BATH-3	8'-0"X4'-7"	2450X1440
18	BALCONY-3	13'-0"X3'-6"	3940X1080

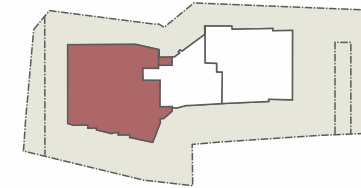
(\*indicates average room size)

## UNIT- 4F | 4 BHK

### 4<sup>th</sup> FLOOR

SALEABLE AREA - 255.62 Sq.m (2751.51 Sq.ft)  
 RERA CARPET AREA - 150.48 Sq.m (1619.75 Sq.ft)  
 BALCONY AREA - 22.10 Sq.m (237.88 Sq.ft)

### KEY PLAN



NO.	NAME	SIZE IN FT	SIZE IN MM
1	LIVING-DINING	22'-4"X20'-9"	6810X6330
2	KITCHEN	8'-3"X13'-1"	2500X4000
3	UTILITY	5'-2"X3'-8"	1565X1095
4	BALCONY-1	5'-11"X5'-3"	1800X1600
5	PWD ROOM	4'-5"X4'-5"	1350X1350
6	BALCONY-2	7'-4"X10'-0"	2240X3050
7	OFFICE	10'-6"X12'-1"	3200X3700
8	BALCONY-3	6'-0"X7'-11"	1830X2420
9	HALLWAY-1	7'-5"X4'-0"	2280X1200
10	MASTER BEDROOM	10'-6"X12'-0"	3200X3670
11	BATH-1	4'-5"X8'-2"	1350X2500
12	BALCONY-4	3'-3"X12'-5"	1000X3800
13	BEDROOM-2	10'-6"X11'-3"	3200X3450
14	BATH-2	4'-5"X9'-3"	1350X2830*
15	HALLWAY-2	6'-7"X4'-11"	2000X1500
16	BEDROOM-3	13'-1"X12'-0"	4000X3650
17	LOUNGE	5'-3"X5'-4"	1600X1620
18	BATH-3	8'-0"X5'-11"	2450X1800
19	BALCONY-5	3'-3"X5'-3"	1000X1620
20	BEDROOM-4	11'-6"X13'-7"	3520X4150
21	BATH-4	5'-9"X8'-2"	1770X2500
22	BALCONY-6	3'-3"X12'-0"	1000X3350

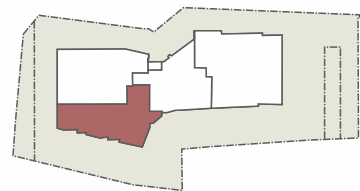
(\*indicates average room size)

## UNIT- 5A | 2 BHK

### 5<sup>TH</sup> FLOOR

SALEABLE AREA	- 109.46 Sq.m (1178.24Sq.ft)
RERA CARPET AREA	- 66.80 Sq.m (719.03 Sq.ft)
BALCONY AREA	- 3.34 Sq.m (35.95 Sq.ft)
OPEN TERRACE AREA	- 2.1 Sq.m (22.6 Sq.ft)

### KEY PLAN



NO.	NAME	SIZE IN FT	SIZE IN MM
1	LIVING	10'-6"X8'-11"	3200X2720
2	DINING	14'-0"X8'-10"	4280X2700
3	KITCHEN	8'-3"X8'-3"	2500*X2500
4	UTILITY	5'-2"X3'-7"	1565X1095
5	BALCONY-1	5'-11"X5'-3"	1800X1600
6	HALLWAY-1	8'-0"X4'-0"	2460X1200
7	HALLWAY-2	7'-5"X4'-0"	2285X1200
8	MASTER BEDROOM	10'-6"X 12'-0"	3200X3670
9	BATH-1	4'-5"X8'-3"	1350X2500
10	OPEN TERRACE	3'-3"X6'-9"	1000X2100*
11	BEDROOM-2	10'-6"X11'3"	3200X3450
12	BATH-2	4'-5"X9'-3"	1350X2830*

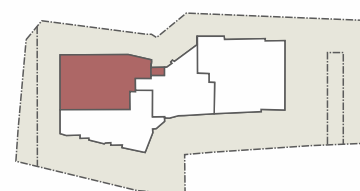
(\*indicates average room size)

## UNIT- 5B | 2BHK

### 5<sup>TH</sup> FLOOR

SALEABLE AREA	- 120.89 Sq.m (1301.28 Sq.ft)
RERA CARPET AREA	- 70.48 Sq.m (758.68 Sq.ft)
BALCONY AREA	- 4.65 Sq.m (50.05 Sq.ft)
OPEN TERRACE AREA	- 10.24 Sq.m (110.23 Sq.ft)

### KEY PLAN



NO.	NAME	SIZE IN FT	SIZE IN MM
1	LIVING	11'-1X12-11"	3380X3920"
2	DINING	10'-0"X6'-3"	3120X1930
3	KITCHEN	10'-6"X8'-0"	3200X2450*
4	UTILITY	6'-0"X4'-1"	1830X1230
5	BALCONY-1	7'-4"X3'-5"	2250X1050
6	HALLWAY	6'-7"X3'-7"	2000X1100
7	MASTER BEDROOM	11'-0"X12'-0"	3350X3650
8	LOUNGE	7'-4"X5'-3"	2250X1620
9	BATH-1	6'-11"X5'-11"	2100X1800
10	BEDROOM-2	11'-6"X11'-9"	3520X3600
11	BATH-2	5'-9"X7'-3"	1770X2200*

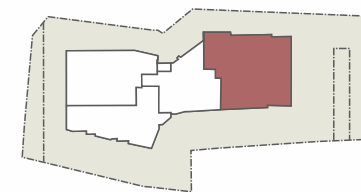
(\*indicates average room size)

## UNIT- 5C | 3BHK

### 5<sup>TH</sup> FLOOR

SALEABLE AREA	- 167.02 Sq.m (1797.80 Sq.ft)
RERA CARPET AREA	- 96.85 Sq.m (1042.48 Sq.ft)
BALCONY AREA	- 9.83 Sq.m (105.81 Sq.ft)
OPEN TERRACE AREA	- 7.35 Sq.m (79.12 Sq.ft)

### KEY PLAN



NO.	NAME	SIZE IN FT	SIZE IN MM
1	FOYER	7'-3"X3'-17"	2210X1100
2	LIVING	11'-8"X11'-7"	3550X3520
3	DINING	7'-9"X11'-7"	2380X3520
4	KITCHEN	9'- 10"X11'-7"	3000X3520
5	UTILITY	9'-1"X4'-3"	2770X1300
6	BALCONY-1	9'-1"X4'-9"	2770X1450"
7	HALLWAY-1	4'-11"X5'-10"	1500X1780
8	HALLWAY-2	5'-6"X3'-1"	1680X950
9	MASTER BEDROOM	11'-0"X11'-6"	3350X3500
10	BATH-1	4'-9"X8'-4"	1450X2550'
11	BALCONY-2	7'-1"X3'-5"	2170X1050"
12	BEDROOM-2	11'-0"X12'-0"	3350X3940
13	BATH-2	4'-9"X8'-2"	1450X2500"
14	BEDROOM-3	12'-5"X13'-8"	3790X4150
15	BATH-3	8'-0"X4'-7"	2450X1400

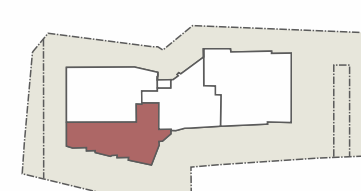
(\*indicates average room size)

## UNIT- 6A, 7A, 8A & 9A | 2BHK

### 6<sup>TH</sup> TO 9<sup>TH</sup> FLOOR

SALEABLE AREA	- 107.57 Sq.m (1157.90 Sq.ft)
RERA CARPET AREA	- 66.81 Sq.m (719.14 Sq.ft)
BALCONY AREA	- 3.34 Sq.m (35.95 Sq.ft)

### KEY PLAN



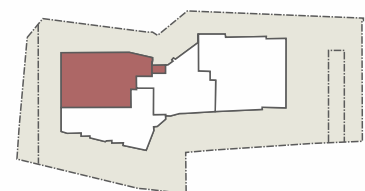
NO.	NAME	SIZE IN FT	SIZE IN MM
1	LIVING	10'-6"X8'-11"	3200X2720
2	DINING	14'-1"X 8'-10"	4280X2700
3	KITCHEN	8'-3"X8'-3"	2500*X2500
4	UTILITY	5'-2"X3'-7"	1565X1095
5	BALCONY-1	5'-11"X5'-3"	1800X1600
6	HALLWAY-1	8'-0"X4'-0"	2460X1200
7	HALLWAY-2	7'-7"X4'-0 "	2290X1200
8	MASTER BEDROOM	10'-6"X 12'-0"	3200X3660
9	BATH-1	4'-5"X8'-2"	1350X2500
10	BEDROOM-2	10'-6"X11'-3"	3200X3450
11	BATH-2	4'-6"X9'-5"	1350X2850*

(\* indicates average room size)

## UNIT- 6B, 7B, 8B & 9B | 2 BHK

6<sup>TH</sup> TO 9<sup>TH</sup> Floor  
 SALEABLE AREA - 112.21 Sq.m (1207.85 Sq.ft)  
 RERA CARPET AREA - 70.48 Sq.m (758.64 Sq.ft)  
 BALCONY AREA - 4.65 Sq.m (50.05 Sq.ft)

KEY PLAN



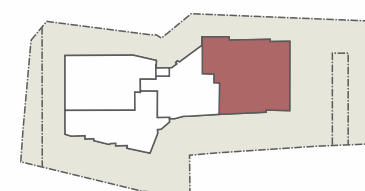
NO.	NAME	SIZE IN FT	SIZE IN MM
1	LIVING	11'-1"X12'-10"	3380X3920"
2	DINING	10'-2"X6'-3"	3120X1930
3	KITCHEN	10'-6"X7'-11"	3200X2420
4	UTILITY	6'-0"X4'-1"	1830X1230
5	BALCONY-1	7'-4"X3'-9"*	2240X1150*
6	HALLWAY-1	6'-6"X3'-7"	2000X1100
7	MASTER BEDROOM	11'-0"X12'-0"	3350X3650
8	LOUNGE	7'-4"X5'-3"	2250X1620
9	BATH-1	6'-11"X5'-11"	2100X1800
10	BEDROOM-2	11'-1"X11'-9"	3520X3600
11	BATH-2	5'-9"X7'-8"	1770X2330

(\*indicates average room size)

## UNIT- 6C, 7C, 8C & 9C | 3BHK

6<sup>TH</sup> TO 9<sup>TH</sup> Floor  
 SALEABLE AREA - 158.84 Sq.m (1709.75 Sq.ft)  
 RERA CARPET AREA - 96.85 Sq.m (1042.48 Sq.ft)  
 BALCONY AREA - 9.83Sq.m (105.81 Sq.ft)

KEY PLAN



NO.	NAME	SIZE IN FT	SIZE IN MM
1	FOYER	7'-3"X3'-17"	2210X1100"
2	LIVING	11'-8"X11'-7"	3550X3520
3	DINING	7'-9"X11'-7"	2380X3520
4	KITCHEN	9'-10"X11'-7"	3000X3520
5	UTILITY	9'-1"X4'-3"	2770X1300
6	BALCONY-1	9'-1"X4'-9"*	2770X1450 *
7	HALLWAY-1	4'-11"X5'-10"	1500X1780
8	HALLWAY-2	5'-6"X3'-1"	1680X950
9	MASTER BEDROOM	11'-0"X11'-6"	3350X3500
10	BATH-1	4'-9"X8'-4"*	1450X2550*
11	BALCONY-2	7'-1"X3'-5"*	2170X1050*
12	BEDROOM-2	11'-0"X12'-0"	3350X3940
13	BATH-2	4'-9"X8'-2" **	1450X2500*
14	BEDROOM-3	12'-5"X13'-8"	3790X4150
15	BATH-3	8'-0"X4'-7"	2450X1400

(\*indicates average room size)

## LOCATION PLAN

WHERE THE WORLD IS NEAR YOU



# SPECIFICATIONS

<b>PILE</b>	Foundation: End bearing piles with percussion drilling using tractor mounted rotary boring mechanism.
<b>STRUCTURE</b>	FRAME: RCC Framed structure complying with seismic zone 3 design.  WALLS: Concrete Block/ Brick Masonry for Interior Partition.
<b>FLOORING</b>	GENERAL: Main entrance lobby shall be finished using Granite/ Vitrified Tiles/ Marble as per architect's design. (Kajaria/ Nitco/ AGL or Equivalent) Lift lobby, fascia wall and floor using Vitrified Tiles and as per architect's design. (Kajaria/ Nitco/ AGL or Equivalent)  STAIR CASES: Granite or Vitrified Tiles (Kajaria/ Nitco/ AGL or Equivalent)  MASTER BEDROOM: Stone Polymer Composite Flooring (SPC). (Welpsun/ Kingdom/ Stanley/ Armstrong or Equivalent)  BEDROOMS AND KITCHEN: 80 x 80 Vitrified Tiles. (Kajaria/ Nitco/ AGL or Equivalent)  TOILET: Designer Ceramic/ Vitrified Tile 30 x 30 cm for floor and 30 x 60cm / nearest available size for wall. (Kajaria/ Nitco/ AGL or Equivalent)  UTILITY: 30 x 30 ceramic tiles for floor and 60 x 60 for nearest size for walls upto 140cms height and 60 cm above the counter if any. (Kajaria/ Nitco/ AGL or Equivalent)  BALCONIES/OPEN TERRACE/DECKS/ PRIVATE TERRACE: Vitrified/Ceramic Matte Finish Tiles 30 x 30 cm. (Kajaria/ Nitco/ AGL or Equivalent)  CAR PARKING: VDF flooring/ 30 x 30 cm vitrified tiles of exterior grade.
<b>KITCHEN</b>	WASH/ COUNTERS: Using Granite of minimum thickness 16 mm. (Jet black/Galaxy black or Equivalent)  SINK: Stainless Steel Single Bowl with Drain Board. (Nirali /Diamond/ Prince or Equivalent)  SINK IN UTILITY: Stainless Steel Single Deep Bowl Sink without Drain Board. (Nirali/ Diamond/ Prince or Equivalent)  HOOD AND HOB: Provision for Hood and Hob Exhaust Pipe.  COCKROACH TRAPS: Provided as gratings wherever needed. (Chilli, Viking, OMCO or Equivalent)  FAUCETS: Wall mounted CP Finish, hard metal body fittings. (Roca/ Grohe/ Kohler or Equivalent)

<b>PLUMBING AND SANITARY</b>	SANITARY FITTINGS: EWC wall hung ,Counter wash basins (Roca/ Grohe/ Kohler/ Hindware-Queo or Equivalent)  Concealed Cistern (Roca/ Grohe/ Kohler/ Hindware-Queo or Equivalent)  Faucets shall be single lever concealed diverters CP finish, heavy body metal finish (Roca/ Hettich/ Grohe/ Kohler/ Hindware-Queo or Equivalent)  Provision for hot water shall be provided for Overhead Shower in each bathroom (Roca/ Hettich/ Grohe/ Kohler/ Hindware-Queo or Equivalent)  WATER SUPPLY LINES: All concealed water supply lines shall be of ISI marked CPVC pipes in toilets. All water supply lines shall be ASTM Pipes. All other lines and steam water drain pipes shall be of PVC (Supreme/ Finolex/Astral or Equivalent).  TAPS AND FITTINGS: Chromium plated fitting and fixtures
<b>HAND RAILS</b>	BALCONY: Using G.I. Sections (Jindal/ Tata/ Apollo)  MAIN STAIRCASES: Using M.S./S.S. Sections (Jindal/ Tata)  FIRE STAIRCASES: M.S. Sections (Jindal/ Tata/ Apollo)  WINDOW GRILLS: MS Safety Grills
<b>DOORS AND WINDOWS</b>	MAIN DOORS: Engineered wood door frame with shutter. (Fero/ Sumai/ Jacsons or Equivalent)  INTERNAL DOOR: Engineered wood door frame with shutter. (Fero/ Sumai/ Jacsons or Equivalent)  TOILET DOOR: Laminated flush doors (Fero/ Sumai/ Jacsons or Equivalent)  BALCONY DOOR: Powder coated aluminium with Toughened Glass fixed/ sliding shutters.  WINDOWS: Prefabricated Colour/ Anodized Aluminum/ UPVC sliding shutters. (Jindal/ Indal or Equivalent)  HARDWARES: All hardwares shall be of CP Brass, Tower Bolts, Door Stoppers, Ball Bearing Hinges and Locks. (Godrej/ Dorset/ Hettich/ Yale or Equivalent)  ENTRANCE DOOR: Hardwares shall have Magic Eye, Safety Chain, Door Stoppers and Digital Lock. (Godrej/ Dorset/ Hettich, Yale or Equivalent)

<b>PAINTING</b>	CEILING TREATMENT: Premium emulsion paint shall be applied on cement based putty finished surfaces. (Asian/ Berger/ Nerolac or Equivalent)  INTERNAL WALL TREATMENT: Premium emulsion paint shall be applied on cement based putty finished surfaces. (Asian/ Berger/ Nerolac or Equivalent)  EXTERIOR WALL TREATMENT: Weather shield exterior grade emulsion/ texture paint. (Asian/ Berger/ Nerolac or Equivalent)
<b>ELEVATORS</b>	Lift shall be provided as per the Govt. norms with automatic doors. Automatic Rescue Device(ARD) also shall be provided as an additional premium feature. (Kone/ Fujitech/ Johnson or Equivalent)
<b>AIR CONDITIONING</b>	Wired split AC provision in all bedrooms and dummy provision in Living /Dining.
<b>HOME AUTOMATION</b>	Access control entry to the common entrance/ foyers and amenities. Motion sensors for selected light points in common areas. Multilevel security systems for common areas and lobbies. Home security monitoring like gas leakage detector, emergency panic intrusion alarm, and visitors tracking.
<b>ELECTRICAL</b>	GENERAL: Concealed wiring with PVC insulated copper cables and Modular type switches. Adequate fan and light points. 6/16 Amps power plugs controlled by MCB with RCCB protection. Independent Energy meter for each apartments.  Concealed copper wiring. (Finolex/ Havells/ Polycab/ V-Guard/ RR)  Modular type Switches. (Legrand/ L&T/ Schenider/ M.K./ Havells or Equivalent)  Power backup will be provided for all common services and selected light and fan point in Living, Dining and all Bedrooms and a Refrigerator point in Kitchen. One light point in each toilet. One 5 Amp plug point in the Living room shall be provided for emergency recharging of any devices. However this shall be limited to 900 Watts for 1BHK, 1200 Watts for 2BHK and 1500 Watts for the 3BHK Apartments.  As a safety feature we shall provide an LED Skirting Lamp (Foot Lamp) in all the bedrooms.  Light fixtures for the Common areas, external areas, apartment balconies and above the entrance door of the individual apartments shall be provided as standard. (Wipro/ Havells/ Hybec/ Bright/ LUKER or Equivalent)  Adequate ELCB and MCB shall be provided in each apartment. (Legrand/ L&T/ Schenider/ M.K or Equivalent)  Provision for GEYSER points and fresh air fans shall be provided for all toilets.  Provision for telephone and Internet shall be provided in the living room and master bedroom.  Provision for Cable TV/DTH shall be provided in the living and master bedroom.

<b>STANDARD ELECTRICAL POINTS SCHEDULE</b>	
<b>ELECTRICAL NOTES</b>	Additional points required shall be confirmed one month prior to casting the respective slab.  Location of the additional points shall be marked on the drawing and returned.  Providing additional points are subject to statutory regulations of KSEB.  One light in all bedrooms will be 2way controls.  Fixtures like A/C, Geyser, Water Purifier, Exhaust fan etc are not part of the provisions provided under this contract.  Heather Homes shall engage only well experienced and licensed contractors to carry out flat electrification works. No other person from outside will be permitted to do works in apartments until handing over and during the after sales service period. In the case of LAND OWNERS/ occupants of flats carrying out any such works / repairs in flats which are in their possession, the BUILDER will not be responsible for any damages to the installations in the flat.  USB charging points in all bedrooms and living.
<b>WATER SUPPLY</b>	Water supply through underground sump. Independent water meter for each apartment at extra cost.
<b>FIRE FIGHTING</b>	Fire fighting arrangements as per Kerala Fire and Rescue Departments norms.
<b>GAS CONNECTION</b>	Reticulated Gas connection in all apartments subject to Govt. rules.
<b>LANDSCAPING</b>	Well-designed Landscaped area.  Provision for sprinkler and drip irrigation(ATS) shall be provided in essential area in landscaping.  Interlock Pavers to be laid in open drive ways and walk ways.  Hard and soft landscaping shall be provided as per the landscape consultant's design.





### PAYMENT SCHEDULE

SL. NO.	STAGE OF CONSTRUCTION	%
1	On Signing of Agreement	25%
2	On Commencement of Piling	10%
3	On Completion of Pile Cap	06%
4	On Completion of 1st basement for Slab	06%
5	On Completion of Ground Floor Slab	06%
6	On Completion of 2nd Floor Slab	06%
7	On Completion of 4th Floor Slab	06%
8	On Completion of 6th Floor Slab	06%
9	On Completion of 8th Floor Slab	06%
10	On Completion of Entire Structure	06%
11	On Completion of Internal plastering of Respective Apt	05%
12	On Completion of External Plastering	05%
13	On Completion of Internal Painting of Respective Apt	03%
14	On Completion of Flooring of Respective Apt	02%
15	On or Before Handing Over of the Respective Apt	02%
<b>TOTAL</b>		<b>100%</b>





OFFICE (INDIA): HEATHER HOMES (P) LTD.  
TC 12/762 , Near Gout. Law College, Barton Hill,  
Thiruvananthapuram - 695 035 Kerala.  
Phone: +91 471 230 3322

PROJECT ADDRESS: Heather Felicity, Kuravankonam,  
Kowdiar P.O., Trivandrum.  
Sales Phone: +91 8590 800 400, 8590 500 400  
[www.heatherhomes.in](http://www.heatherhomes.in)

OFFICE (DUBAI):  
Phone: +971549942966

SCAN FOR WEBSITE



ARCHITECT:



BANGALORE

Member  
**CREDAI**



Disclaimer : Information herein is subject to change as and when required. Heather Homes (P) Ltd reserves the right to change, alter, add or delete any specifications and other details mentioned herein without prior permission or notice. This brochure is conceptual and not a legal offering. The furniture / images shown in the brochure are only for the purpose of illustrating a possible layout and do not form a part of the offering.

Date of Printing: 26-7-23